

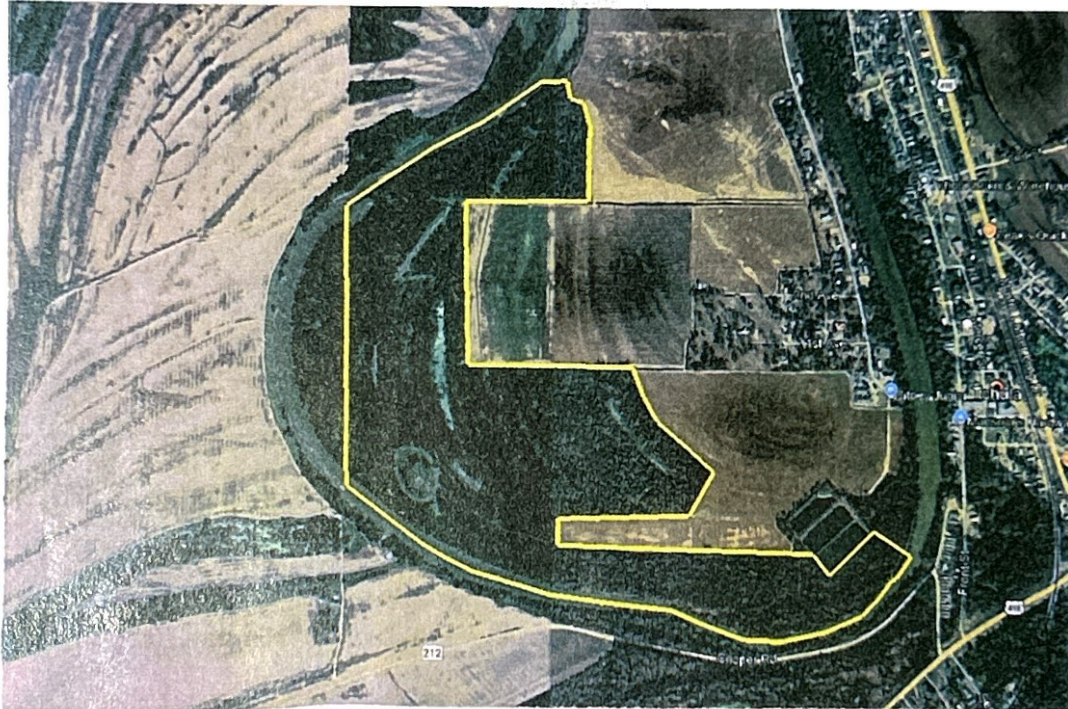
David P. Fisher · (662) 299-8064 · dpfisher47@yahoo.com

Dome
Holmes County, MS
242.23± acres

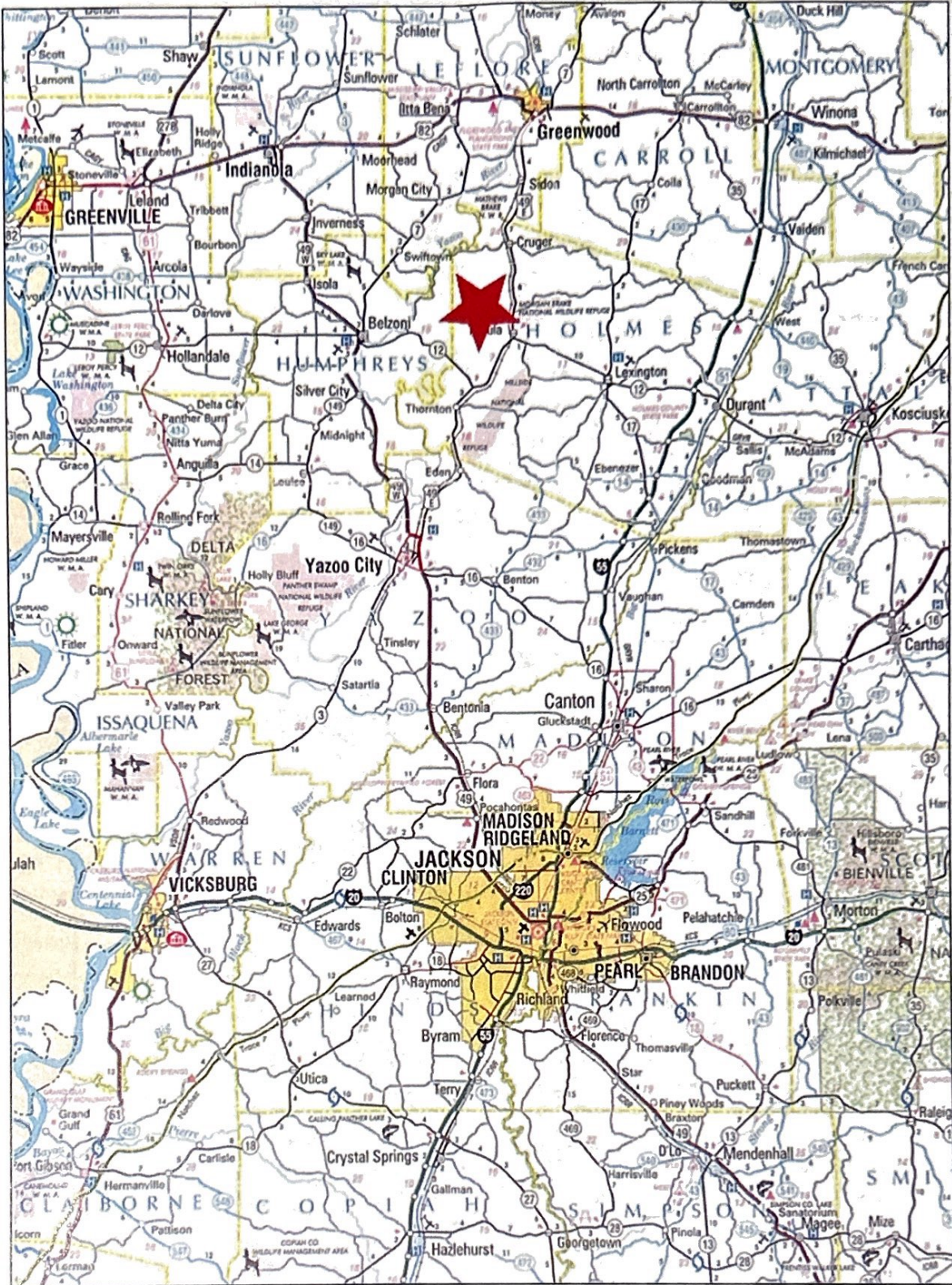
Property consists of 242.23 acres located between the hills of Holmes County and the Delta cropland. The timber was harvested years ago and replanted in a variety of acorn producing hardwoods. It offers a perfect blend of planted hardwood and dense natural forage creating a ideal habitat for deer and duck.

Property is located in Sections 6 and 7, Township 15 North, Range 1 East in Holmes County, MS west of Tchula Lake. It is situated 30 miles south of Greenwood and 50 miles north of Madison, MS within 2 miles of Morgan Brake and Hillside National Wildlife Refuge. This recreational/hunting tract has multiple food plots and interior roads. The seller will plant the food plots and maintain the interior road system for the buyer for the first year.

The property is being offered for \$955,900.



The information contained herein has been collected from sources considered reliable, but we do not guarantee its accuracy and disclaim any liability for errors and omission.

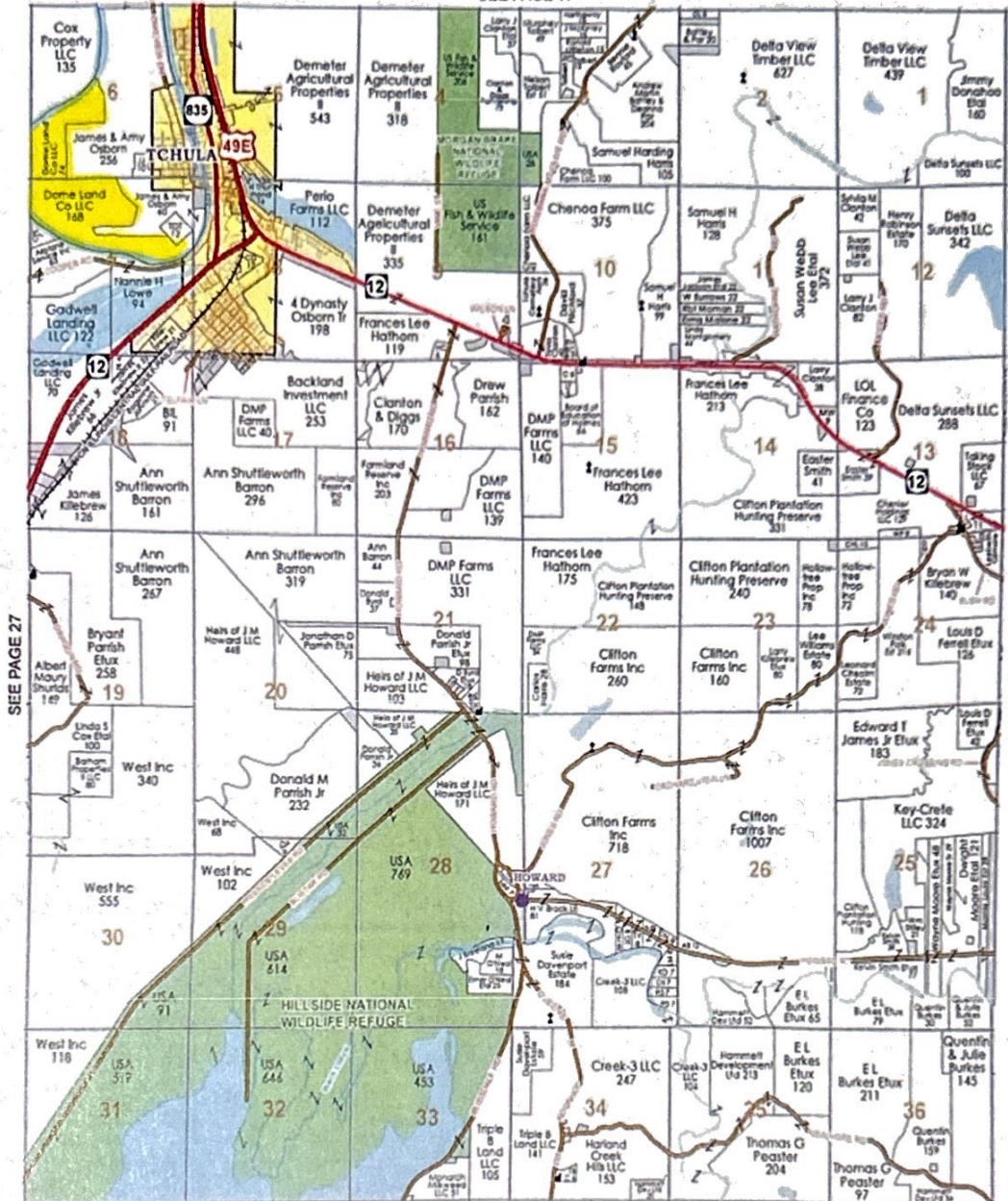


The information contained herein has been collected from sources considered reliable, but we do not guarantee its accuracy and disclaim any liability for errors and omissions.



Township 15N - Range 1E

SEE PAGE 17

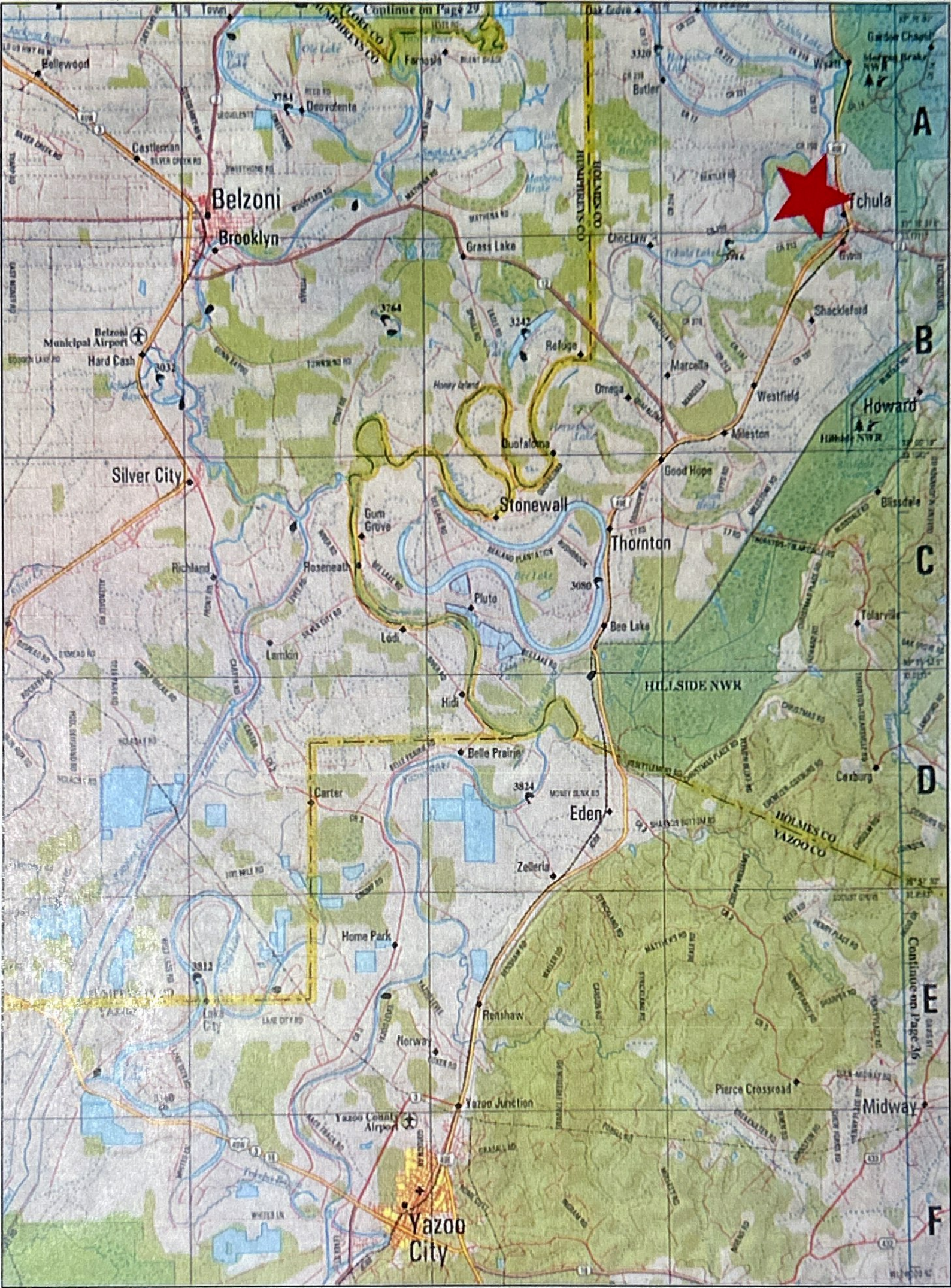


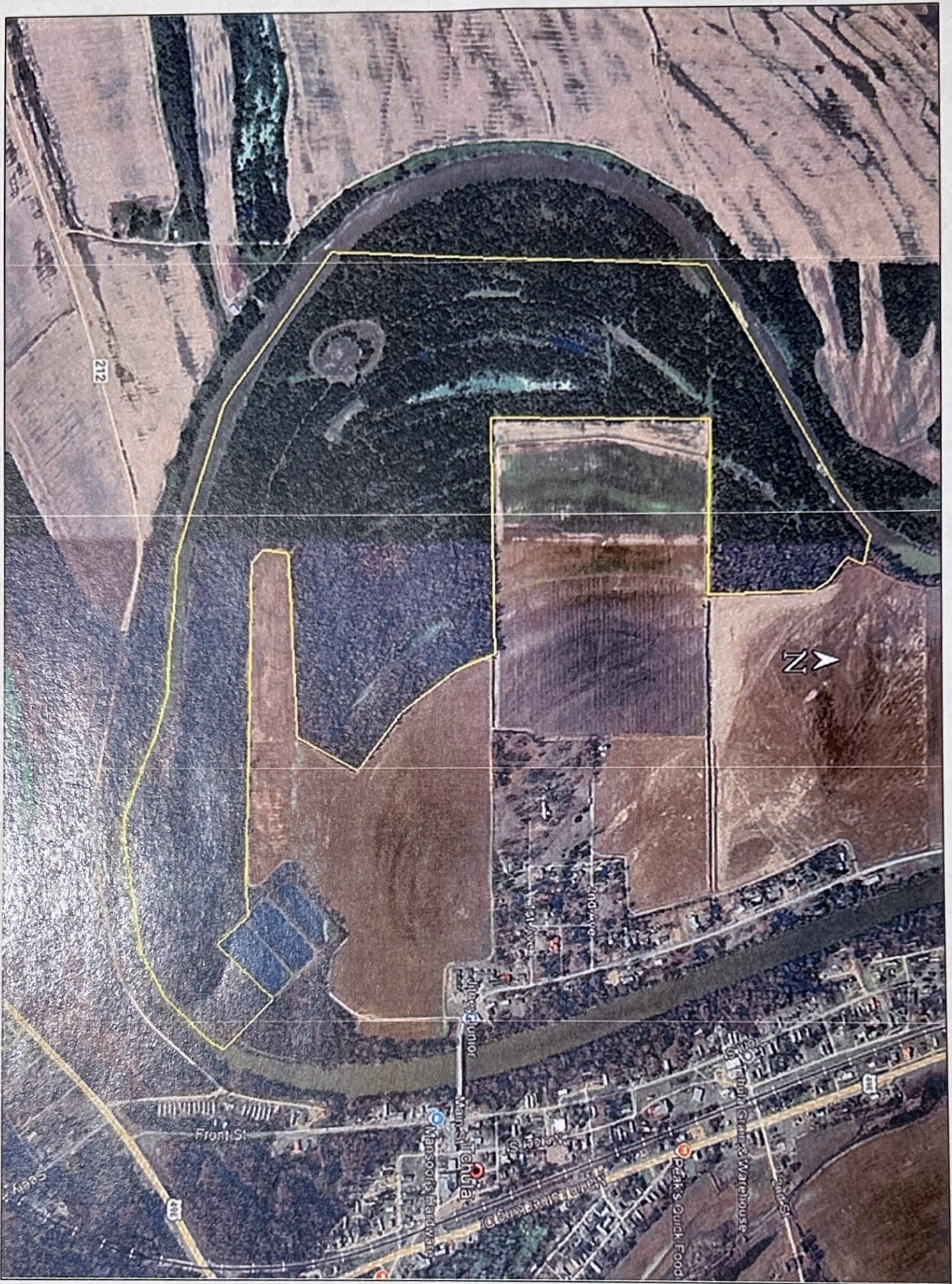
SEE PAGE 27

SEE PAGE 31

SEE PAGE 43

The information contained herein has been collected from sources considered reliable, but we do not guarantee its accuracy and disclaim any liability for errors and omissions.

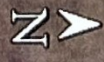




The information contained herein has been collected from sources considered reliable, but we do not guarantee its accuracy and disclaim any liability for errors and omissions.



212



1st Ave

2nd Ave

Linney, Jr









