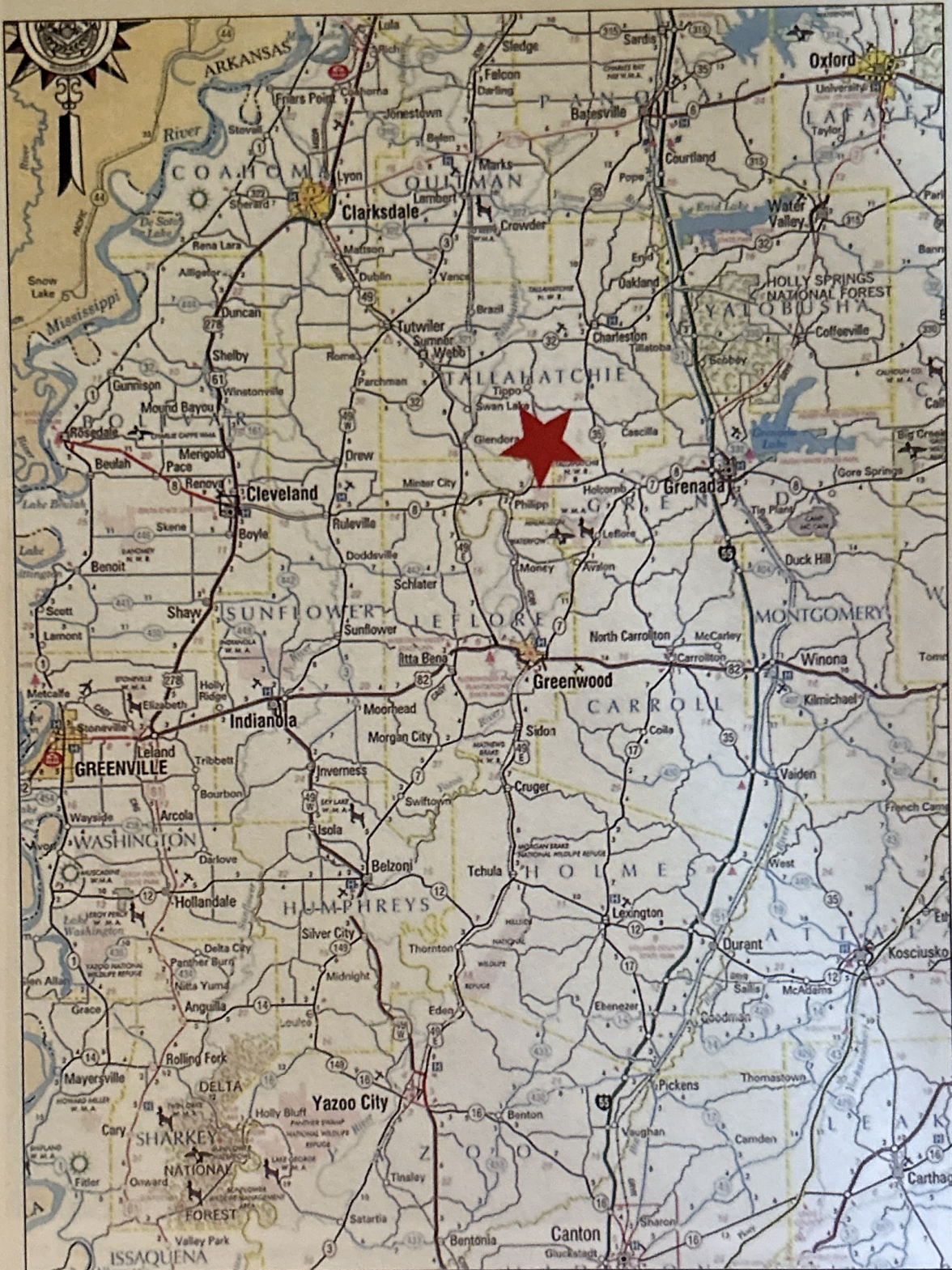


David P. Fisher · (662) 299-8064 · dpfisher47@yahoo.com

Tallahatchie County, MS
288± acres

- PROPERTY:** Property consists of 288± acres in 2 closely located tracts. This property is a mixture of cropland, 188.99, acres, and CRP, 69.85, acres. The CRP hardwood is 16 years old. Approximately 86.5 acres of the cropland is irrigated by an electric well. This well also helps to supply supplemental water to the duck hunting areas. The CRP offers excellent deer hunting. The property borders the Tallahatchie National Wildlife Refuge.
- LOCATION:** Property is located in Sections 15, 22, Township 22 North, Range 1 East in Tallahatchie County 1 mile east of Phillip, MS. with frontage on Tipppo Road and Hwy 8. Coordinates 33.755122,-90.17316341
- CROP BASE:** Wheat .20 ac. Corn .3 ac. Soybeans 74.9 ac. Cotton 13.04 ac. Generic 3.46 ac. Rice 22.40 ac. Sorghum 6.20 ac.
- IMPROVEMENTS:** 1 electric irrigation well
House 3BR, 1.5 bath
40'x50' shed
Cargo Storage Container
- PROJECTED INCOME:** Cropland Rent \$11,500
Hunting Lease \$20,000
CRP Payments \$ 6000 Present CRP Annual Payments
\$ 8200 82 additional ac. to be enrolled on 9/30/25
Total Income \$45,700
- OFFERING PRICE:** \$ 1,550,000

The information contained herein has been collected from sources considered reliable, but we do not guarantee its accuracy and disclaim ny liability for errors and omission.



The information contained herein has been collected from sources considered reliable, but we do not guarantee its accuracy and disclaim any liability for errors and omissions.



The information contained herein has been collected from sources considered reliable, but we do not guarantee its accuracy and disclaim any liability for errors and omissions.



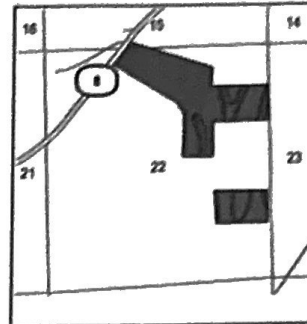
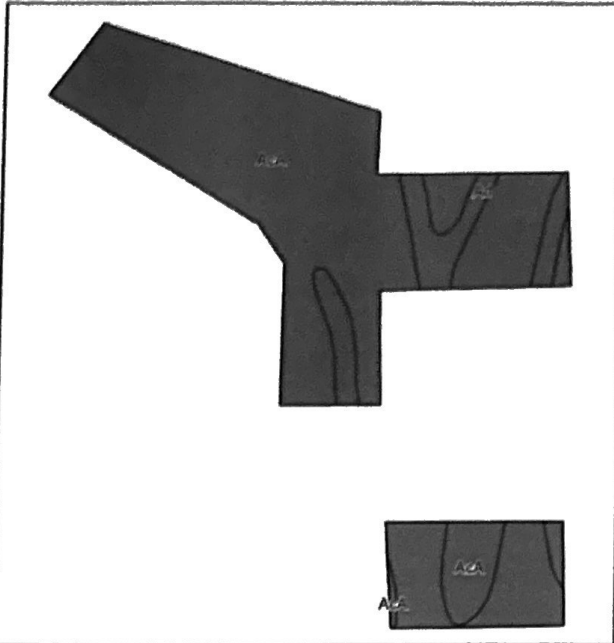
Township 22N Range 1E

SEE PAGE 37



The information contained herein has been collected from sources considered reliable, but we do not guarantee its accuracy and disclaim any liability for errors and omissions.

Soils Map



State: Mississippi
 County: Tallahatchie
 Location: 22-22N-1E
 Township: District 4



Soils data provided by USDA and NRCS.

Area Symbol MS135, Soil Area Version 22

Code	Soil Description	Acres	Percent of field	Non-Irr Class Legend	Non-Irr Class 'c	Common bermudagrass AUM	Cotton lint Lbs	Improved bermudagrass AUM	Rice Bu	Soybeans Bu	Tall fescue AUM	Tall fescue Irrigated AUM	Wheat Bu	*n NCCPI Soybeans	
AcA	Alligator clay, 0 to 2 percent slopes	82.68	77.1%		IIIc	6.5	550		9	6	30	9	45	47	31
Ad	Alligator clay, depositional	24.59	22.9%		IIIc	6.5	550		9	6	30	9	45	47	31
Weighted Average						3.00	6.5	550	9	6	30	9	45	47	*n 31

*n: The aggregation method is "Weighted Average using all components"
 *c: Using Capabilities Class Dominant Condition Aggregation Method

Soils data provided by USDA and NRCS

The information contained herein has been collected from sources considered reliable, but we do not guarantee its accuracy and disclaim any liability for errors and omissions.



The information contained herein has been collected from sources considered reliable, but we do not guarantee its accuracy and disclaim any liability for errors and omissions.

DUCK HUNTING - LIGHT BLUE SHADED AREAS

















Property: 10000 Acres
Tract: 3347
Total: 4181

Tract Creation Total: 100 Acres



United States
Department of
Agriculture

Tallahatchie County, Mississippi



- CRP
- Cropland
- Tract Boundary
- Non-Cropland

Wetland Determination Identifiers

- Restricted Use
- ▼ Limited Restrictions
- Exempt from Conservation Compliance Provisions

For COMPLIANCE, unless otherwise noted:
 IU=GR for Wheat(SRW), Oats(WTR), Rice(LGR), Corn(YEL), Grain Sorghum(GRS), Soybeans(COM);
 IU=NP for Peanuts(RUN), IU='FH' for FAVs;
 For Grass/Mixed Forage: IU='FG' if Hayland, 'GZ' if (P)astureland, 'LS' if Left Standing;
 Crop Status=Initial; Irrigation Practice='N' except for Rice; Planting Pattern=Solid; I=Idle; Shares=100%

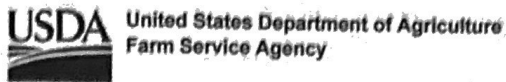
2025 Program Year
 Map Created November 29, 2024

Farm 3947
Tract 4181

Tract Cropland Total: 102.57 acres

United States Department of Agriculture (USDA) Farm Service Agency (FSA) maps are for FSA Program administration only. This map does not represent a legal survey or reflect actual ownership, rather it depicts the information provided directly from the producer and/or National Agricultural Imagery Program (NAIP) imagery. The producer accepts the data 'as is' and assumes all risks associated with its use. USDA-FSA assumes no responsibility for actual or consequential damage incurred as a result of any user's reliance on this data outside FSA Programs. Wetland identifiers do not represent the size, shape, or specific determination of the area. Refer to your original determination (CPA-026 and attached maps) for exact boundaries and determinations or contact USDA Natural Resources Conservation Service (NRCS).

MISSISSIPPI
TALLAHATCHIE



FARM : 3947
Prepared : 7/15/25 9:42 AM CST
Crop Year : 2025

Form: FSA-156EZ

Abbreviated 156 Farm Record

See Page 2 for non-discriminatory Statements.

Operator Name : TWIN BAYOU FARMS
CRP Contract Number(s) : 11185A, 11216
Recon ID : 28-135-2019-18
Transferred From : None
ARCPLC G/M/F Eligibility : Eligible

Farm Land Data

Farmland	Cropland	DCP Cropland	WBP	EWP	WRP	GRP	Sugarcane	Farm Status	Number Of Tracts
108.91	102.57	102.57	0.00	0.00	0.00	0.00	0.0	Active	1
State Conservation	Other Conservation	Effective DCP Cropland	Double Cropped		CRP	MPL	DCP Ag.Rel. Activity	SOD	
0.00	0.00	62.52	0.00		40.05	0.00	0.00	0.00	

Crop Election Choice

ARC Individual	ARC County	Price Loss Coverage
None	SOYBN	WHEAT, CORN, SUP, RICE-LGR

DCP Crop Data

Crop Name	Base Acres	CCC-505 CRP Reduction Acres	PLC Yield	HIP
Wheat	0.20	0.00	29	
Corn	0.30	0.00	40	
Soybeans	30.40	0.00	43	56
Seed Cotton	7.36	0.00	1591	
Unassigned Generic Base	1.84	0.00	0	
Rice-Long Grain	22.40	0.00	4110	
TOTAL	62.50	0.00		

NOTES

Tract Number : 4181

Description : T22N,R1E,S15,22
FSA Physical Location : MISSISSIPPI/TALLAHATCHIE
ANSI Physical Location : MISSISSIPPI/TALLAHATCHIE
BIA Unit Range Number :
HEL Status : NHEL: No agricultural commodity planted on undetermined fields
Wetland Status : Wetland determinations not complete
WL Violations : None
Owners : FOUR M LAND & TIMBER, LLC
Other Producers : None
Recon ID : 28-135-2012-56

Abbreviated 156 Farm Record

Tract Land Data

Tract 4181 Continued ...

Farm Land	Cropland	DCP Cropland	WBP	EWP	WRP	GRP	Sugarcane
108.91	102.57	102.57	0.00	0.00	0.00	0.00	0.0
State Conservation	Other Conservation	Effective DCP Cropland	Double Cropped	CRP	MPL	DCP Ag. Rel Activity	SOD
0.00	0.00	62.52	0.00	40.05	0.00	0.00	0.00

DCP Crop Data

Crop Name	Base Acres	CCC-505 CRP Reduction Acres	PLC Yield
Wheat	0.20	0.00	29
Corn	0.30	0.00	40
Soybeans	30.40	0.00	43
Seed Cotton	7.36	0.00	1591
Unassigned Generic Base	1.84	0.00	0
Rice-Long Grain	22.40	0.00	4110
TOTAL	62.50	0.00	

NOTES

In accordance with Federal civil rights law and U.S. Department of Agriculture (USDA) civil rights regulations and policies, the USDA, its Agencies, offices, and employees, and institutions participating in or administering USDA programs are prohibited from discriminating based on race, color, national origin, religion, sex, disability, age, marital status, family/parental status, income derived from a public assistance program, political beliefs, or reprisal or retaliation for prior civil rights activity, in any program or activity conducted or funded by USDA (not all bases apply to all programs). Remedies and complaint filing deadlines vary by program or incident.

Persons with disabilities who require alternative means of communication for program information (e.g., Braille, large print, audiotape, American Sign Language, etc.) should contact the responsible Agency or USDA's TARGET Center at (202) 720-2600 (voice and TTY) or contact USDA through the Federal Relay Service at (800) 877-8339. Additionally, program information may be made available in languages other than English.

To file a program discrimination complaint, complete the USDA Program Discrimination Complaint Form, AD-3027, found online at [How to File a Program Discrimination Complaint](#) and at any USDA office or write a letter addressed to USDA and provide in the letter all of the information requested in the form. To request a copy of the complaint form, call (866) 632-9992. Submit your completed form or letter to USDA by: (1) Mail: U.S. Department of Agriculture Office of the Assistant Secretary for Civil Rights, 1400 Independence Avenue, SW Washington, D.C. 20250-9410; (2) Fax: (202) 690-7442; or (3) Email: program.intake@usda.gov. USDA is an equal opportunity provider, employer, and lender.



Common Land Unit

- Cropland
- ▭ Tract Boundary

Wetland Determination Identifiers

- Restricted Use
- ▼ Limited Restrictions
- Exempt from Conservation Compliance Provisions

For COMPLIANCE, unless otherwise noted:

IU='GR' for Wheat(SRW), Oats(WTR), Rice(LGR), Corn(YEL), Grain Sorghum(GRS), Soybeans(COM); IU='NP' for Peanuts(RUN), IU='FH' for FAVs; For Grass/Mixed Forage: IU='FG' if Hayland, 'GZ' if (P)astureland, 'LS' if Left Standing; Crop Status=Initial; Irrigation Practice='N' except for Rice; Planting Pattern=Solid; I=Idle; Shares=100%

2025 Program Year

Map Created November 29, 2024

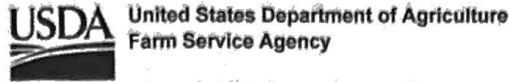
Farm 3943

Tract 4572

Tract Cropland Total: 23.77 acres

United States Department of Agriculture (USDA) Farm Service Agency (FSA) maps are for FSA Program administration only. This map does not represent a legal survey or reflect actual ownership; rather it depicts the information provided directly from the producer and/or National Agricultural Imagery Program (NAIP) imagery. The producer accepts the data 'as is' and assumes all risks associated with its use. USDA-FSA assumes no responsibility for actual or consequential damage incurred as a result of any user's reliance on this data outside FSA Programs. Wetland identifiers do not represent the size, shape, or specific determination of the area. Refer to your original determination (CPA-026 and attached maps) for exact boundaries and determinations or contact USDA Natural Resources Conservation Service (NRCS).

MISSISSIPPI
TALLAHATCHIE



FARM : 3943
Prepared : 7/15/25 9:41 AM CST
Crop Year : 2025

Form: FSA-156EZ

Abbreviated 156 Farm Record

See Page 2 for non-discriminatory Statements.

Operator Name : TWIN BAYOU FARMS
CRP Contract Number(s) : None
Recon ID : 28-135-2019-15
Transferred From : None
ARCPLC G/W Eligibility : Eligible

Farm Land Data

Farmland	Cropland	DCP Cropland	WBP	EWP	WRP	GRP	Sugarcane	Farm Status	Number Of Tracts
23.77	23.77	23.77	0.00	0.00	0.00	0.00	0.0	Active	1
State Conservation	Other Conservation	Effective DCP Cropland	Double Cropped		CRP	MPL	DCP Ag.Rel. Activity	SOD	
0.00	0.00	23.77	0.00		0.00	0.00	0.00	0.00	

Crop Election Choice

ARC Individual	ARC County	Price Loss Coverage
None	SOYBN	None

DCP Crop Data

Crop Name	Base Acres	CCC-505 CRP Reduction Acres	PLC Yield	HIP
Soybeans	17.30	0.00	30	54
TOTAL	17.30	0.00		

NOTES

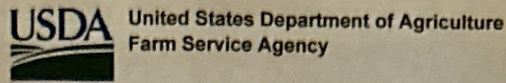
--

Tract Number : 4572
Description : J-14 T22N, R1E, S22
FSA Physical Location : MISSISSIPPI/TALLAHATCHIE
ANSI Physical Location : MISSISSIPPI/TALLAHATCHIE
BIA Unit Range Number :
HEL Status : NHEL: No agricultural commodity planted on undetermined fields
Wetland Status : Wetland determinations not complete
WL Violations : None
Owners : FOUR M LAND & TIMBER, LLC
Other Producers : None
Recon ID : 28-135-2019-14

Tract Land Data

Farm Land	Cropland	DCP Cropland	WBP	EWP	WRP	GRP	Sugarcane
23.77	23.77	23.77	0.00	0.00	0.00	0.00	0.0
State Conservation	Other Conservation	Effective DCP Cropland	Double Cropped	CRP	MPL	DCP Ag. Rel Activity	SOD
0.00	0.00	23.77	0.00	0.00	0.00	0.00	0.00

MISSISSIPPI
TALLAHATCHIE
Form: FSA-156EZ



Abbreviated 156 Farm Record

FARM : 3943
Prepared : 7/15/25 9:41 AM CST
Crop Year : 2025

Tract 4572 Continued ...

DCP Crop Data

Crop Name	Base Acres	CCC-505 CRP Reduction Acres	PLC Yield
Soybeans	17.30	0.00	30
TOTAL	17.30	0.00	

NOTES

In accordance with Federal civil rights law and U.S. Department of Agriculture (USDA) civil rights regulations and policies, the USDA, its Agencies, offices, and employees, and institutions participating in or administering USDA programs are prohibited from discriminating based on race, color, national origin, religion, sex, disability, age, marital status, family/parental status, income derived from a public assistance program, political beliefs, or reprisal or retaliation for prior civil rights activity, in any program or activity conducted or funded by USDA (not all bases apply to all programs). Remedies and complaint filing deadlines vary by program or incident.

Persons with disabilities who require alternative means of communication for program information (e.g., Braille, large print, audiotape, American Sign Language, etc.) should contact the responsible Agency or USDA's TARGET Center at (202) 720-2600 (voice and TTY) or contact USDA through the Federal Relay Service at (800) 877-8339. Additionally, program information may be made available in languages other than English.

To file a program discrimination complaint, complete the USDA Program Discrimination Complaint Form, AD-3027, found online at [How to File a Program Discrimination Complaint](#) and at any USDA office or write a letter addressed to USDA and provide in the letter all of the information requested in the form. To request a copy of the complaint form, call (866) 632-9992. Submit your completed form or letter to USDA by: (1) Mail: U.S. Department of Agriculture Office of the Assistant Secretary for Civil Rights, 1400 Independence Avenue, SW Washington, D.C. 20250-9410; (2) Fax: (202) 690-7442; or (3) Email: program.intake@usda.gov. USDA is an equal opportunity provider, employer, and lender.



United States
Department of
Agriculture

Tallahatchie County, Mississippi



CRP
 Tract Boundary
 Non-Cropland

Wetland Determination Identifiers

- Restricted Use
- ▲ Limited Restrictions
- Exempt from Conservation Compliance Provisions

For COMPLIANCE, unless otherwise noted:

IU=GR for Wheat(SRW), Oats(WTR), Rice(LGR),
 Corn(YEL), Grain Sorghum(GRS), Soybeans(COM);
 IU=NP for Peanuts(RUN), IU=FG for FAVs;
 For Grass/Mixed Forage: IU=FG if Hayland,
 'GZ' if (P)astureland, 'LS' if Left Standing;
 Crop Status=Initial; Irrigation Practice='N' except for
 Rice; Planting Pattern=Solid, I=Idle; Shares=100%

Tract Cropland Total: 90.60 acres

2025 Program Year

Map Created November 29, 2024

Farm 3458

Tract 1388

United States Department of Agriculture (USDA) Farm Service Agency (FSA) maps are for FSA Program administration only. This map does not represent a legal survey or reflect actual ownership; rather it depicts the information provided directly from the producer and/or National Agricultural Imagery Program (NAIP) imagery. The producer accepts the data 'as is' and assumes all risks associated with its use. USDA-FSA assumes no responsibility for actual or consequential damage incurred as a result of any user's reliance on this data outside FSA Programs. Wetland identifiers do not represent the size, shape, or specific determination of the area. Refer to your original determination (CPA-026 and attached maps) for exact boundaries and determinations or contact USDA Natural Resources Conservation Service (NRCS).



- CRP
 - Cropland
 - Tract Boundary
 - Non-Cropland
- Wetland Determination Identifiers**
- Restricted Use
 - ▼ Limited Restrictions
 - Exempt from Conservation Compliance Provisions

For COMPLIANCE, unless otherwise noted:
 IU='GR' for Wheat(SRW), Oats(WTR), Rice(LGR), Corn(YEL), Grain Sorghum(GRS), Soybeans(COM);
 IU='NP' for Peanuts(RUN), IU='FH' for FAVs;
 For Grass/Mixed Forage: IU='FG' if Hayland, 'GZ' if (P)astureland, 'LS' if Left Standing;
 Crop Status=Initial; Irrigation Practice='N' except for Rice; Planting Pattern=Solid; I=Idle; Shares=100%

2025 Program Year
 Map Created November 29, 2024

Farm 3458
Tract 1522

Tract Cropland Total: 26.85 acres

United States Department of Agriculture (USDA) Farm Service Agency (FSA) maps are for FSA Program administration only. This map does not represent a legal survey or reflect actual ownership; rather it depicts the information provided directly from the producer and/or National Agricultural Imagery Program (NAIP) imagery. The producer accepts the data 'as is' and assumes all risks associated with its use. USDA-FSA assumes no responsibility for actual or consequential damage incurred as a result of any user's reliance on this data outside FSA Programs. Wetland identifiers do not represent the size, shape, or specific determination of the area. Refer to your original determination (CPA-026 and attached maps) for exact boundaries and determinations or contact USDA Natural Resources Conservation Service (NRCS).

MISSISSIPPI
TALLAHATCHIE



United States Department of Agriculture
Farm Service Agency

FARM : 3458

Prepared : 7/15/25 9:40 AM CST

Form: FSA-156EZ

Crop Year : 2025

See Page 3 for non-discriminatory Statements.

Abbreviated 156 Farm Record

Operator Name : FOUR M LAND & TIMBER, LLC
 CRP Contract Number(s) : 11364
 Recon ID : 28-135-2010-18
 Transferred From : None
 ARCPLC G/I/F Eligibility : Eligible

Farm Land Data

Farmland	Cropland	DCP Cropland	WBP	EWP	WRP	GRP	Sugarcane	Farm Status	Number Of Tracts
134.83	117.45	117.45	0.00	0.00	0.00	0.00	0.0	Active	2
State Conservation	Other Conservation	Effective DCP Cropland	Double Cropped		CRP	MPL	DCP Ag.Rel. Activity	SOD	
0.00	0.00	96.65	6.20		20.80	0.00	0.00	0.00	

Crop Election Choice

ARC Individual	ARC County	Price Loss Coverage
None	SOYBN	SUP

DCP Crop Data

Crop Name	Base Acres	CCC-505 CRP Reduction Acres	PLC Yield	HIP
Soybeans	8.60	0.00	26	0
Seed Cotton	6.48	0.00	1591	
Unassigned Generic Base	1.62	0.00	0	
TOTAL	16.70	0.00		

NOTES

Tract Number : 1388

Description : J-14 T22N,R1E,S14,15
 FSA Physical Location : MISSISSIPPI/TALLAHATCHIE
 ANSI Physical Location : MISSISSIPPI/TALLAHATCHIE
 BIA Unit Range Number :
 HEL Status : NHEL: No agricultural commodity planted on undetermined fields
 Wetland Status : Wetland determinations not complete
 WL Violations : None
 Owners : FOUR M LAND & TIMBER, LLC
 Other Producers : None
 Recon ID : None

Tract Land Data

Farm Land	Cropland	DCP Cropland	WBP	EWP	WRP	GRP	Sugarcane
93.27	90.60	90.60	0.00	0.00	0.00	0.00	0.0

Tract 1388 Continued ...

State Conservation	Other Conservation	Effective DCP Cropland	Double Cropped	CRP	MPL	DCP Ag. Rel Activity	SOD
0.00	0.00	90.60	6.20	0.00	0.00	0.00	0.00

DCP Crop Data

Crop Name	Base Acres	CCC-505 CRP Reduction Acres	PLC Yield
Soybeans	8.56	0.00	26
Seed Cotton	1.68	0.00	1591
Unassigned Generic Base	0.42	0.00	0
TOTAL	10.66	0.00	

NOTES

Tract Number : 1522

Description : J-14 T22N,R1E,S15
 FSA Physical Location : MISSISSIPPI/TALLAHATCHIE
 ANSI Physical Location : MISSISSIPPI/TALLAHATCHIE
 BIA Unit Range Number :
 HEL Status : NHEL: No agricultural commodity planted on undetermined fields
 Wetland Status : Wetland determinations not complete
 WL Violations : None
 Owners : FOUR M LAND & TIMBER, LLC
 Other Producers : None
 Recon ID : None

Tract Land Data

Farm Land	Cropland	DCP Cropland	WBP	EWP	WRP	GRP	Sugarcane
41.56	26.85	26.85	0.00	0.00	0.00	0.00	0.0

State Conservation	Other Conservation	Effective DCP Cropland	Double Cropped	CRP	MPL	DCP Ag. Rel Activity	SOD
0.00	0.00	6.05	0.00	20.80	0.00	0.00	0.00

DCP Crop Data

Crop Name	Base Acres	CCC-505 CRP Reduction Acres	PLC Yield
Soybeans	0.04	0.00	26
Seed Cotton	4.80	0.00	1591
Unassigned Generic Base	1.20	0.00	0
TOTAL	6.04	0.00	

NOTES

MISSISSIPPI
TALLAHATCHIE
Form: FSA-156EZ



Abbreviated 156 Farm Record

FARM : 3458
Prepared : 7/15/25 9:40 AM CST
Crop Year : 2025

In accordance with Federal civil rights law and U.S. Department of Agriculture (USDA) civil rights regulations and policies, the USDA, its Agencies, offices, and employees, and institutions participating in or administering USDA programs are prohibited from discriminating based on race, color, national origin, religion, sex, disability, age, marital status, family/parental status, income derived from a public assistance program, political beliefs, or reprisal or retaliation for prior civil rights activity, in any program or activity conducted or funded by USDA (not all bases apply to all programs). Remedies and complaint filing deadlines vary by program or incident.

Persons with disabilities who require alternative means of communication for program information (e.g., Braille, large print, audiotape, American Sign Language, etc.) should contact the responsible Agency or USDA's TARGET Center at (202) 720-2600 (voice and TTY) or contact USDA through the Federal Relay Service at (800) 877-8339. Additionally, program information may be made available in languages other than English.

To file a program discrimination complaint, complete the USDA Program Discrimination Complaint Form, AD-3027, found online at [How to File a Program Discrimination Complaint](#), and at any USDA office or write a letter addressed to USDA and provide in the letter all of the information requested in the form. To request a copy of the complaint form, call (866) 632-9992. Submit your completed form or letter to USDA by: (1) Mail: U.S. Department of Agriculture Office of the Assistant Secretary for Civil Rights, 1400 Independence Avenue, SW Washington, D.C. 20250-9410; (2) Fax: (202) 690-7442; or (3) Email: program.intake@usda.gov. USDA is an equal opportunity provider, employer, and lender.



Common Land Unit

- Cropland
- ▭ Tract Boundary

Wetland Determination Identifiers

- Restricted Use
- ▼ Limited Restrictions
- Exempt from Conservation Compliance Provisions

For COMPLIANCE, unless otherwise noted:

IU=GR' for Wheat(SRW), Oats(WTR), Rice(LGR), Corn(YEL), Grain Sorghum(GRS), Soybeans(COM); IU=NP' for Peanuts(RUN), IU='FH' for FAVs; For Grass/Mixed Forage: IU='FG' if Hayland, 'GZ' if (P)astureland, 'LS' if Left Standing; Crop Status=Initial; Irrigation Practice='N' except for Rice; Planting Pattern=Solid; I=Idle; Shares=100%

2025 Program Year

Map Created November 29, 2024

Farm 1537

Tract 1392

Tract Cropland Total: 23.99 acres

United States Department of Agriculture (USDA) Farm Service Agency (FSA) maps are for FSA Program administration only. This map does not represent a legal survey or reflect actual ownership; rather it depicts the information provided directly from the producer and/or National Agricultural Imagery Program (NAIP) imagery. The producer accepts the data 'as is' and assumes all risks associated with its use. USDA-FSA assumes no responsibility for actual or consequential damage incurred as a result of any user's reliance on this data outside FSA Programs. Wetland identifiers do not represent the size, shape, or specific determination of the area. Refer to your original determination (CPA-026 and attached maps) for exact boundaries and determinations or contact USDA Natural Resources Conservation Service (NRCS).

See Page 2 for non-discriminatory Statements.

Abbreviated 156 Farm Record

Operator Name : TWIN BAYOU FARMS
CRP Contract Number(s) : None
Recon ID : None
Transferred From : None
ARCPLC G//F Eligibility : Eligible

Farm Land Data

Farmland	Cropland	DCP Cropland	WBP	EWP	WRP	GRP	Sugarcane	Farm Status	Number Of Tracts
23.99	23.99	23.99	0.00	0.00	0.00	0.00	0.0	Active	1
State Conservation	Other Conservation	Effective DCP Cropland	Double Cropped		CRP	MPL	DCP Ag.Rel. Activity	SOD	
0.00	0.00	23.99	0.00		0.00	0.00	0.00	0.00	

Crop Election Choice

ARC Individual	ARC County	Price Loss Coverage
None	SOYBN	SORGH

DCP Crop Data

Crop Name	Base Acres	CCC-505 CRP Reduction Acres	PLC Yield	HIP
Grain Sorghum	6.20	0.00	53	
Soybeans	17.70	0.00	47	52
TOTAL	23.90	0.00		

NOTES

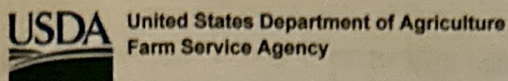
Tract Number : 1392

Description : J-14 T22N,R1E,S22
FSA Physical Location : MISSISSIPPI/TALLAHATCHIE
ANSI Physical Location : MISSISSIPPI/TALLAHATCHIE
BIA Unit Range Number :
HEL Status : NHEL: No agricultural commodity planted on undetermined fields
Wetland Status : Wetland determinations not complete
WL Violations : None
Owners : FOUR M LAND & TIMBER, LLC
Other Producers : None
Recon ID : None

Tract Land Data

Farm Land	Cropland	DCP Cropland	WBP	EWP	WRP	GRP	Sugarcane
23.99	23.99	23.99	0.00	0.00	0.00	0.00	0.0

MISSISSIPPI
TALLAHATCHIE
Form: FSA-156EZ



Abbreviated 156 Farm Record

FARM : 1537
Prepared : 7/15/25 9:39 AM CST
Crop Year : 2025

Tract 1392 Continued ...

State Conservation	Other Conservation	Effective DCP Cropland	Double Cropped	CRP	MPL	DCP Ag. Rel Activity	SOD
0.00	0.00	23.99	0.00	0.00	0.00	0.00	0.00

DCP Crop Data

Crop Name	Base Acres	CCC-505 CRP Reduction Acres	PLC Yield
Grain Sorghum	6.20	0.00	53
Soybeans	17.70	0.00	47
TOTAL	23.90	0.00	

NOTES

In accordance with Federal civil rights law and U.S. Department of Agriculture (USDA) civil rights regulations and policies, the USDA, its Agencies, offices, and employees, and institutions participating in or administering USDA programs are prohibited from discriminating based on race, color, national origin, religion, sex, disability, age, marital status, family/parental status, income derived from a public assistance program, political beliefs, or reprisal or retaliation for prior civil rights activity, in any program or activity conducted or funded by USDA (not all bases apply to all programs). Remedies and complaint filing deadlines vary by program or incident.

Persons with disabilities who require alternative means of communication for program information (e.g., Braille, large print, audiotape, American Sign Language, etc.) should contact the responsible Agency or USDA's TARGET Center at (202) 720-2600 (voice and TTY) or contact USDA through the Federal Relay Service at (800) 877-8339. Additionally, program information may be made available in languages other than English.

To file a program discrimination complaint, complete the USDA Program Discrimination Complaint Form, AD-3027, found online at [How to File a Program Discrimination Complaint](#) and at any USDA office or write a letter addressed to USDA and provide in the letter all of the information requested in the form. To request a copy of the complaint form, call (866) 632-9992. Submit your completed form or letter to USDA by: (1) Mail: U.S. Department of Agriculture Office of the Assistant Secretary for Civil Rights, 1400 Independence Avenue, SW Washington, D.C. 20250-9410; (2) Fax: (202) 690-7442; or (3) Email: program.intake@usda.gov. USDA is an equal opportunity provider, employer, and lender.

CRP-1 (01-08-24)		U.S. DEPARTMENT OF AGRICULTURE Commodity Credit Corporation			1. ST. & CO. CODE & ADMIN. LOCATION 28 135		2. SIGN-UP NUMBER 59	
CONSERVATION RESERVE PROGRAM CONTRACT					3. CONTRACT NUMBER 11364		4. ACRES FOR ENROLLMENT 20.80	
					6. TRACT NUMBER 1522		7. CONTRACT PERIOD FROM: (MM-DD-YYYY) 10-01-2023 TO: (MM-DD-YYYY) 09-30-2038	
5A. COUNTY FSA OFFICE ADDRESS (Include Zip Code) TALLAHATCHIE COUNTY FARM SERVICE AGENCY 360 West Cypress Street, Ste C CHARLESTON, MS38921-2210					8. SIGNUP TYPE: Continuous			
5B. COUNTY FSA OFFICE PHONE NUMBER (Include Area Code): (662) 647-8857 x2								
THIS CONTRACT is entered into between the Commodity Credit Corporation (referred to as "CCC") and the undersigned owners, operators, or tenants (referred to as "the Participant.") The Participant agrees to place the designated acreage into the Conservation Reserve Program ("CRP") or other use set by CCC for the stipulated contract period from the date the Contract is executed by the CCC. The Participant also agrees to implement on such designated acreage the Conservation Plan developed for such acreage and approved by the CCC and the Participant. Additionally, the Participant and CCC agree to comply with the terms and conditions contained in this Contract, including the Appendix to this Contract, entitled Appendix to CRP-1, Conservation Reserve Program Contract (referred to as "Appendix"). By signing below, the Participant acknowledges receipt of a copy of the Appendix/Appendices for the applicable contract period. The terms and conditions of this contract are contained in this Form CRP-1 and in the CRP-1 Appendix and any addendum thereto. BY SIGNING THIS CONTRACT PARTICIPANTS ACKNOWLEDGE RECEIPT OF THE FOLLOWING FORMS: CRP-1; CRP-1 Appendix and any addendum thereto; and, CRP-2, CRP-2C, CRP-2G, or CRP-2C30, as applicable.								
9A. Rental Rate Per Acre		\$ 107.37		10. Identification of CRP Land (See Page 2 for additional space)				
9B. Annual Contract Payment		\$ 2,233.00		A. Tract No.	B. Field No.	C. Practice No.	D. Acres	E. Total Estimated Cost-Share
9C. First Year Payment		\$		1522	0004	CP23	20.80	\$ 5,200.00
(Item 9C is applicable only when the first year payment is prorated.)								
11. PARTICIPANTS (If more than three individuals are signing, see Page 3.)								
A(1) PARTICIPANT'S NAME AND ADDRESS (Include Zip Code) <small>FOUR N LAND & TIMBER, LLC C/O BRIAN MONTGOMERY PO BOX 1973 STARBUVILLE, MS39760-1973</small>		(2) SHARE 100.00 %	(3) SIGNATURE (By)		(4) TITLE/RELATIONSHIP OF THE INDIVIDUAL SIGNING IN THE REPRESENTATIVE CAPACITY		(5) DATE (MM-DD-YYYY)	
B(1) PARTICIPANT'S NAME AND ADDRESS (Include Zip Code)		(2) SHARE %	(3) SIGNATURE (By)		(4) TITLE/RELATIONSHIP OF THE INDIVIDUAL SIGNING IN THE REPRESENTATIVE CAPACITY		(5) DATE (MM-DD-YYYY)	
C(1) PARTICIPANT'S NAME AND ADDRESS (Include Zip Code)		(2) SHARE %	(3) SIGNATURE (By)		(4) TITLE/RELATIONSHIP OF THE INDIVIDUAL SIGNING IN THE REPRESENTATIVE CAPACITY		(5) DATE (MM-DD-YYYY)	
12. CCC USE ONLY		A. SIGNATURE OF CCC REPRESENTATIVE					B. DATE (MM-DD-YYYY)	
NOTE: The following statement is made in accordance with the Privacy Act of 1974 (5 USC 552a - as amended). The authority for requesting the information identified on this form is the Commodity Credit Corporation Charter Act (15 U.S.C. 714 et seq.), the Food Security Act of 1985 (16 U.S.C. 3801 et seq.), the Agricultural Act of 2014 (16 U.S.C. 3831 et seq.), the Agricultural Improvement Act of 2018 (Pub. L. 115-334), the Further Continuing Appropriations and Other Extensions Act, 2024 (Pub. L. 118-22), and the Conservation Reserve Program 7 CFR Part 1410. The information will be used to determine eligibility to participate in and receive benefits under the Conservation Reserve Program. The information collected on this form may be disclosed to other Federal, State, Local government agencies, Tribal agencies, and nongovernmental entities that have been authorized access to the information by statute or regulation and/or as described in applicable Routine Uses identified in the System of Records Notice for USDA/FSA-2, Farm Records File (Automated). Providing the requested information is voluntary. However, failure to furnish the requested information will result in a determination of ineligibility to participate in and receive benefits under the Conservation Reserve Program. Paperwork Reduction Act (PRA) Statement: The information collection is exempted from PRA as specified in 16 U.S.C. 3846(b)(1). The provisions of appropriate criminal and civil fraud, privacy, and other statutes may be applicable to the information provided. RETURN THIS COMPLETED FORM TO YOUR COUNTY FSA OFFICE.								

In accordance with Federal civil rights law and U.S. Department of Agriculture (USDA) civil rights regulations and policies, the USDA, its Agencies, offices, and employees, and institutions participating in or administering USDA programs are prohibited from discriminating based on race, color, national origin, religion, sex, gender identity (including gender expression), sexual orientation, disability, age, marital status, family/parental status, income derived from a public assistance program, political beliefs, or reprisal or retaliation for prior civil rights activity, in any program or activity conducted or funded by USDA (not all bases apply to all programs). Remedies and complaint filing deadlines vary by program or incident.

Persons with disabilities who require alternative means of communication for program information (e.g., Braille, large print, audiotope, American Sign Language, etc.) should contact the responsible Agency or USDA's TARGET Center at (202) 720-2600 (voice and TTY) or contact USDA through the Federal Relay Service at (800) 877-8339. Additionally, program information may be made available in languages other than English.

To file a program discrimination complaint, complete the USDA Program Discrimination Complaint Form, AD-3027, found online at http://www.ascr.usda.gov/complaint_filing_cust.html and at any USDA office or write a letter addressed to USDA and provide in the letter all of the information requested in the form. To request a copy of the complaint form, call (866) 632-9992. Submit your completed form or letter to USDA by: (1) mail: U.S. Department of Agriculture Office of the Assistant Secretary for Civil Rights 1400 Independence Avenue, SW Washington, D.C. 20250-9410; (2) fax: (202) 690-7442, or (3) email: program.intake@usda.gov. USDA is an equal opportunity provider, employer, and lender.

CRP-1 (01-08-24)	U.S. DEPARTMENT OF AGRICULTURE Commodity Credit Corporation		1. ST. & CO. CODE & ADMIN LOCATION 28 135	2. SIGN-UP NUMBER 51
	CONSERVATION RESERVE PROGRAM CONTRACT			3. CONTRACT NUMBER 11185A
5A. COUNTY FSA OFFICE ADDRESS (Include Zip Code) TALLAHATCHIE COUNTY FARM SERVICE AGENCY 360 West Cypress Street, Ste C CHARLESTON, MS38921-2210			6. TRACT NUMBER 4181	7. CONTRACT PERIOD FROM: (MM-DD-YYYY) TO: (MM-DD-YYYY) 10-01-2018 09-30-2028
5B. COUNTY FSA OFFICE PHONE NUMBER (Include Area Code): (662) 647-8857 x2			8. SIGNUP TYPE: Continuous	

THIS CONTRACT is entered into between the Commodity Credit Corporation (referred to as "CCC") and the undersigned owners, operators, or tenants (referred to as "the Participant"). The Participant agrees to place the designated acreage into the Conservation Reserve Program ("CRP") or other use set by CCC for the stipulated contract period from the date the Contract is executed by the CCC. The Participant also agrees to implement on such designated acreage the Conservation Plan developed for such acreage and approved by the CCC and the Participant. Additionally, the Participant and CCC agree to comply with the terms and conditions contained in this Contract, including the Appendix to this Contract, entitled Appendix to CRP-1, Conservation Reserve Program Contract (referred to as "Appendix"). By signing below, the Participant acknowledges receipt of a copy of the Appendix/Appendices for the applicable contract period. The terms and conditions of this contract are contained in this Form CRP-1 and in the CRP-1 Appendix and any addendum thereto. BY SIGNING THIS CONTRACT PARTICIPANTS ACKNOWLEDGE RECEIPT OF THE FOLLOWING FORMS: CRP-1; CRP-1 Appendix and any addendum thereto; and, CRP-2, CRP-2C, CRP-2G, or CRP-2C30, as applicable.

9A. Rental Rate Per Acre	\$ 100.00	10. Identification of CRP Land (See Page 2 for additional space)				
9B. Annual Contract Payment	\$ 2,055.00	A. Tract No.	B. Field No.	C. Practice No.	D. Acres	E. Total Estimated Cost-Share
9C. First Year Payment	\$	4181	0003	CP22	3.23	\$ 0.00
(Item 9C is applicable only when the first year payment is prorated.)		4181	0004	CP22	17.32	\$ 0.00

11. PARTICIPANTS (If more than three individuals are signing, see Page 3.)

A(1) PARTICIPANT'S NAME AND ADDRESS (Include Zip Code) <small>FOUR W LAND & TIMBER, LLC C/O BRIAN MONTGOMERY PO BOX 1973 STARKVILLE, MS39760-1973</small>	(2) SHARE 100.00 %	(3) SIGNATURE (By)	(4) TITLE/RELATIONSHIP OF THE INDIVIDUAL SIGNING IN THE REPRESENTATIVE CAPACITY	(5) DATE (MM-DD-YYYY)
B(1) PARTICIPANT'S NAME AND ADDRESS (Include Zip Code)	(2) SHARE %	(3) SIGNATURE (By)	(4) TITLE/RELATIONSHIP OF THE INDIVIDUAL SIGNING IN THE REPRESENTATIVE CAPACITY	(5) DATE (MM-DD-YYYY)
C(1) PARTICIPANT'S NAME AND ADDRESS (Include Zip Code)	(2) SHARE %	(3) SIGNATURE (By)	(4) TITLE/RELATIONSHIP OF THE INDIVIDUAL SIGNING IN THE REPRESENTATIVE CAPACITY	(5) DATE (MM-DD-YYYY)

12. CCC USE ONLY	A. SIGNATURE OF CCC REPRESENTATIVE	B. DATE (MM-DD-YYYY)
-------------------------	------------------------------------	----------------------

NOTE: The following statement is made in accordance with the Privacy Act of 1974 (5 USC 552a - as amended). The authority for requesting the information identified on this form is the Commodity Credit Corporation Charter Act (15 U.S.C. 714 et seq.), the Food Security Act of 1985 (16 U.S.C. 3801 et seq.), the Agricultural Act of 2014 (16 U.S.C. 3831 et seq.), the Agricultural Improvement Act of 2018 (Pub. L. 115-334), the Further Continuing Appropriations and Other Extensions Act, 2024 (Pub. L. 118-22), and the Conservation Reserve Program 7 CFR Part 1410. The information will be used to determine eligibility to participate in and receive benefits under the Conservation Reserve Program. The information collected on this form may be disclosed to other Federal, State, Local government agencies, Tribal agencies, and nongovernmental entities that have been authorized access to the information by statute or regulation and/or as described in applicable Routine Uses identified in the System of Records Notice for USDA/FSA-2, Farm Records File (Automated). Providing the requested information is voluntary. However, failure to furnish the requested information will result in a determination of ineligibility to participate in and receive benefits under the Conservation Reserve Program.

Paperwork Reduction Act (PRA) Statement: The information collection is exempted from PRA as specified in 16 U.S.C. 3846(b)(1). The provisions of appropriate criminal and civil fraud, privacy, and other statutes may be applicable to the information provided. **RETURN THIS COMPLETED FORM TO YOUR COUNTY FSA OFFICE.**

In accordance with Federal civil rights law and U.S. Department of Agriculture (USDA) civil rights regulations and policies, the USDA, its Agencies, offices, and employees, and institutions participating in or administering USDA programs are prohibited from discriminating based on race, color, national origin, religion, sex, gender identity (including gender expression), sexual orientation, disability, age, marital status, family/parental status, income derived from a public assistance program, political beliefs, or reprisal or retaliation for prior civil rights activity, in any program or activity conducted or funded by USDA (not all bases apply to all programs). Remedies and complaint filing deadlines vary by program or incident.

Persons with disabilities who require alternative means of communication for program information (e.g., Braille, large print, audiotope, American Sign Language, etc.) should contact the responsible Agency or USDA's TARGET Center at (202) 720-2600 (voice and TTY) or contact USDA through the Federal Relay Service at (800) 877-8339. Additionally, program information may be made available in languages other than English.

To file a program discrimination complaint, complete the USDA Program Discrimination Complaint Form, AD-3027, found online at http://www.ascr.usda.gov/complaint_filing_cust.html and at any USDA office or write a letter addressed to USDA and provide in the letter all of the information requested in the form. To request a copy of the complaint form, call (866) 632-9992. Submit your completed form or letter to USDA by: (1) mail: U.S. Department of Agriculture Office of the Assistant Secretary for Civil Rights 1400 Independence Avenue, SW Washington, D.C. 20250-9410; (2) fax: (202) 690-7442; or (3) email: program.intake@usda.gov. USDA is an equal opportunity provider, employer, and lender.

